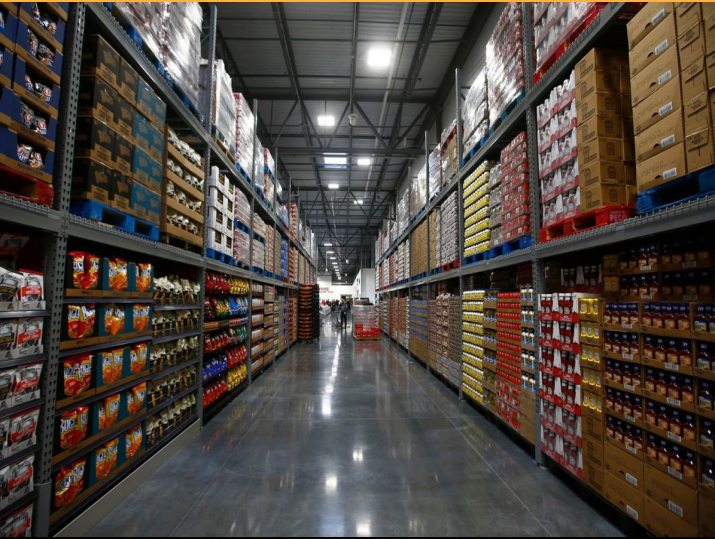


# FOOD DISTRIBUTION CENTER



## CONFIDENCE IN BATTERIES THAT LAST IN DEMANDING APPLICATIONS

A premier food distribution center located in the Midwest with several locations across the heartland utilizes freezer applications that run year-round.

The company's largest site generates 35% of its total volume during the eight weeks leading up to Christmas. Forklifts work around the clock, burning through three to four batteries per shift. With production in high demand during the holiday season, the company needed to improve productivity and decrease downtime caused by diminishing batteries. Riekes helped them implement an efficient battery management system - replacing the existing batteries with an advanced lead-acid and cadmium battery system.

## INITIAL CHALLENGE

The distribution center in Omaha was experiencing significant downtime because of diminishing battery power in a demanding freezer application. Rotating batteries throughout the day squandered productivity and raised safety concerns.

## OUR SOLUTION

Riekes presented two Hoppecke batteries and one charger for the customer's existing application. This solution replaces unsafe and time-consuming battery changes and watering with opportunity charging. These low maintenance, reliable, and fast charging batteries allow equipment to run 24/7 on a single battery - never taking the forklift out of service.

## THE RESULTS

Forklift operators reported exceptional battery life and an overall efficiency boost - allowing them to move products faster. By eliminating the need to rotate batteries, the customer's operation saves time, and reduced safety concerns, and labor costs. Hoppecke batteries run so effectively that the charge rate was turned down 5% to generate less heat and save power. With such great results, Hoppecke batteries and chargers were put in the other facilities.

"Hoppecke batteries have yet to drop below

**50%**

depth of discharge."



GET IN TOUCH  
800. 856. 0931  
[www.RiekesEquipment.com](http://www.RiekesEquipment.com)

**RIEKES**  
EQUIPMENT