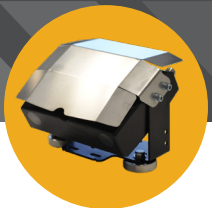


ONE DETECTION SYSTEM THREE CONFIGURABLE ALERTS

- Easy, magnetic installation
- Active ranging calculates pedestrian distance from forklift and aids operators with visual and audible alerts
- Enhances operator awareness via LED lights that activate when a pedestrian is within range of the equipment
- No pedestrian tags required
- Detects people in various types of operational scenarios
- Designed to work in even harsh industrial environments



CAMERA



REMOTE



HARNESS



STANDARD: AUDIBLE

THE OPERATOR HEARS THE SYSTEM STATE,
"PEDESTRIAN WITHIN 16 FEET"



STANDARD: VISUAL

THE DISPLAY MOUNTED IN THE TRUCK SHOWS
THE ZONE WHERE DETECTIONS OCCURRED



ADVANCED: TRACTION

DECELERATION FEELS SIMILAR TO THE
OPERATOR'S FOOT LIFTING OFF ACCELERATOR



The camera has a 110° field of view mounted on the rear of the lift truck. Depending on conditions, the camera can identify humans at 16 - 20 feet.

SEE IT IN
ACTION



MINIMIZE YOUR LIABILITY RISK



2-SYSTEM OFFERING

AUDIBLE & VISUAL



- Aftermarket: All truck classes
- Factory: All truck classes



3-SYSTEM OFFERING

AUDIBLE, VISUAL & TRACTION ALERTS



- Aftermarket: Class 1, 4, 5 Sit-Down (rear-only, standard)
- Factory: Class 1, 4, 5 Sit-Down (rear-only, standard)



* Installation not recommended on trucks older than five years

QUESTIONS?

When do audible, visual and traction alerts disengage?

Alerts disengage when pedestrians are no longer detected in range and in view of the camera.

How can operators view the position of detected pedestrians?

Operators should always identify the pedestrian visually. The display mounted inside the truck compartment helps operators understand where the detection occurred after the operator stops the truck.

Are multi-camera options available?

Yes, the two-alert (audio and visual alert) system is available with multiple cameras as a field-installed option. Ask about two or three-alert factory-installed multi-camera systems.

Can the system be installed on my existing forklift fleet?

Yes, the two-alert system can be installed on any forklift. The three-alert system can be installed on Hyster and Yale forklifts meeting configuration requirements and are less than five years old.

Is it possible to change the placement of the alert display?

The factory will install the alert display in a standard position based on truck model. Ask about possible options to change to the location.

Is the audible alert available in various languages?

The audible alert is only available in English.

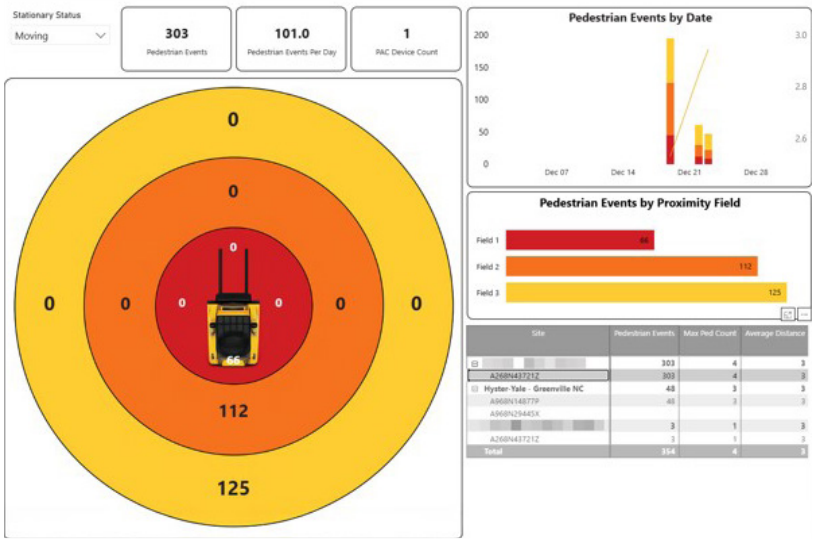
Can the system be used both indoors and outdoors?

Yes, camera adapts to various lighting and environmental conditions; however, complete darkness is a challenge for any vision system.

Is it possible to use the system in cold storage?

Yes, however, traveling in and out of cold storage areas could lead to condensation on the lense. If the camera view is obstructed, the operator will be alerted of reduced functionality.

CAMERA EVENT DASHBOARD



TURN DATA INTO SMARTER DECISIONS

- Reduce risk of collisions
- Improve compliance and safety culture
- Gain visibility into high-risk operating patterns

PROVIDES ACTIONABLE INSIGHT

- **Real-Time Monitoring:** Capture detection events whether equipment is moving or stationary
- **Scheduled Reporting:** View event tables with pedestrian counts, distances and motion status
- **Visual Analytics:** See patterns by date, hazard level and equipment

THE COSTS OF DOING NOTHING

- 70% of incidents are due to operator error.
- 40% rising turnover rate in warehouses cause many operators to lack experience.
- More than a third of lost workdays are associated with muscular or skeletal problems.
- Those lost work days result in \$20 billion in direct costs (workers' comp) and \$100 billion in indirect costs (hiring and training).

CALL FOR A FREE ONE-WEEK DEMO

800.856.0931
 RIEKESEQUIPMENT.COM

- OMAHA, NE**
 402.593.1181
- KANSAS CITY, MO**
 816.221.7335
- LINCOLN, NE**
 402.464.0271
- SIoux FALLS, SD**
 605.401.6200
- SIoux CITY, IA**
 712.233.1494
- WEST FARGO, ND**
 701.281.3049
- GRAND ISLAND, NE**
 308.384.1266

The camera is designed to detect humans in different positions, but may not always recognize pedestrians if they are hidden or the view is blocked. The forklift operator is still responsible for controlling the lift truck, staying alert, looking in the direction of travel and following site rules. The system may experience delays of up to 300 milliseconds for alerts and 600 milliseconds to engage traction alerts, depending on the truck model. It is optimized for speeds of 5 mph or less. Alerts stop once the pedestrian is no longer in the camera's view.



PEDESTRIAN AWARENESS CAMERA OPERATOR ASSIST SYSTEM

RIEKES
 EQUIPMENT

800.856.0931
 RiekesEquipment.com